



Model	Voltage	kW	FLA	CFM	Vacuum	Noise Level	Net Weight	
					"Hg	db(A)	kg	lbs
RPVH400-1	1/60/115	1.0	w/a	11.4	29.1	w/a	29	60
RPVH400-2	1/60/230	1.0	w/a	11.4	29.1	w/a	29	60
RPVH400-3	1/50/220	1.0	w/a	10.6	29.1	w/a	29	60

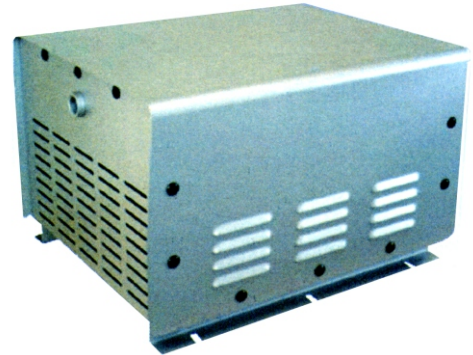
*Refer to curves below for detailed performance data. Performance data and product specifications are subject to change without prior notice. Actual performance may vary by ±10%.

STANDARD FEATURES

- Compact rigid connecting rod
- Heat-releasing aluminum piston housing
- Cylinder hard-coated treatment for long life
- Sturdy valve plate provides trouble-free, long service life
- Shock absorbing mounting feet
- Motor thermal protector
- Capacitor start motor
- 4 pole AC motor
- High efficient cooling fan
- Fan cover prevents contact
- Special sealing cap for long life
- -4 to 40 Deg C ambient
- Open motor enclosure

ACCESSORIES

An air filter is required to obtain warranty coverage.



TECHNICAL DATA Available on line www.all-star-usa.com

If viewing this page online, just click on the links below

- Performance Temperature Rise Curves
- Standard Dimension Page
- Amperage
- Accessories
- Wiring Diagram

DIMENSIONS (Inch)			
	Length	Width	Height
Outside	17.7	15.25	11.0

Registered by one or more of these standards agency

