



Model	Voltage	Watts	FLA	CFM	Sound Level		Net Weight	
					"HG	db(A)	kg	lbs
RPV50-1	1/60/115	180	w/a	1.76	26.7	w/a	6.9	16
RPV50-2	1/60/230	180	w/a	1.76	26.7	w/a	6.9	16
RPV50-3	1/50/220	180	w/a	1.4	26.7	w/a	6.9	16

\*Refer to curves below for detailed performance data. Performance data and product specifications are subject to change without prior notice. Actual performance may vary by ± 10%.

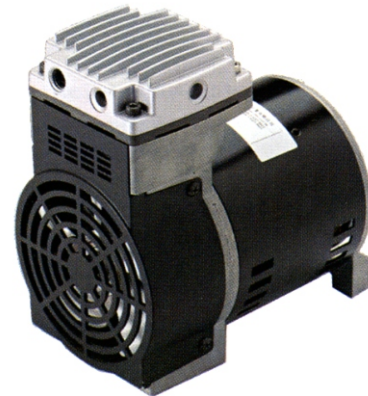
**STANDARD FEATURES**

- Compact rigid connecting rod
- Heat-releasing aluminum piston housing
- Cylinder hard-coated treatment for long life
- Sturdy valve plate provides trouble-free, long service life
- Shock absorbing mounting feet
- Motor thermal protector

- Capacitor start motor
- 4 pole AC motor
- High efficient cooling fan
- Fan cover prevents contact
- Special sealing cap for long life
- -4 to 40 Deg C ambient
- Open motor enclosure

**ACCESSORIES**

An air filter is required to obtain warranty coverage.



**TECHNICAL DATA** Available on line [www.all-star-usa.com](http://www.all-star-usa.com)

If viewing this page online, just click on the links below

- Performance Temperature Rise Curves
- Standard Dimension Page
- Amperage
- Accessories
- Wiring Diagram

DIMENSIONS (Inch)			
	Length	Width	Height
Outside	7.5	6.0	7.8
Mounting	6.5	3.5	M6

Registered by one or more of these standards agency

